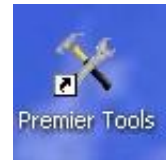




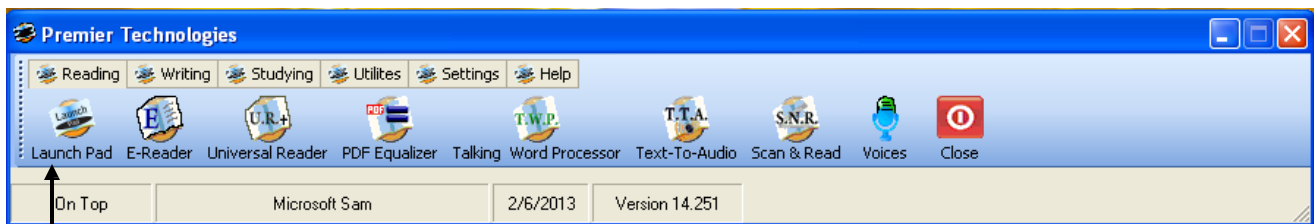
## Attention - Parents and Students

We want to share some great news with you about our MPS **Premier AT Home** website where you can download **powerful reading, writing and studying tools** to be used **on your home computers**. This program is sponsored by MPS in conjunction with Premier Literacy.

Premier AT Home offers many tools. After downloading Premier (instructions on back) you will see this icon on your desktop.



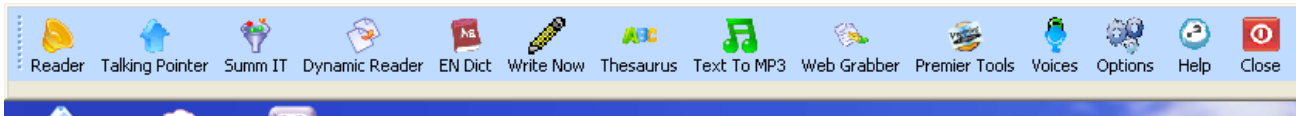
Click on the Premier Tools icon and you will see this toolbar.



**A few features on this toolbar include:**

- Word Prediction
- Text to Audio
- Universal Reader
- Talking Word Processor
- Talking Dictionary
- Talking Calculator

Click on the Launch Pad and this tool bar will appear at the top of your computer screen.



**A few features on this toolbar include:**

- Talking Pointer
- Talking Dictionary
- Dynamic Reader
- Text-To-MP3

\*\*Video tutorials are available at [www.readingmadeeasy.com](http://www.readingmadeeasy.com) for each Premier tool

We are excited to be able to offer these tools for use on your home computer. Follow the instructions on the back of this page to start using the tools today!

If you have any questions feel free to email [atteam@milwaukee.k12.wi.us](mailto:atteam@milwaukee.k12.wi.us). Visit our [AT Website](http://www5.milwaukee.k12.wi.us/dept/at), too!

Your MPS Assistive Technology Team

## LOGIN/DOWNLOAD INSTRUCTIONS

Premier AT Home can only be installed on computers owned by the MPS students, parents, and/or staff.

1. Go to [www.premierathome.com](http://www.premierathome.com). You will see this Log In screen

2. Type in Username  
**mpshome**  
Password  
**access**  
click  
**Log In**



3. When you see this screen click on the Start Downloading Tab



4. Scroll down
  - a. To download Premier to a Windows computer click here
  - b. To download Premier to a Mac computer click here

For technical assistance contact *Premier Assistive Technology* at 815 927-7390  
Email [CRS@readingmadeeasy.com](mailto:CRS@readingmadeeasy.com) or [atteam@milwaukee.k12.wi.us](mailto:atteam@milwaukee.k12.wi.us)